



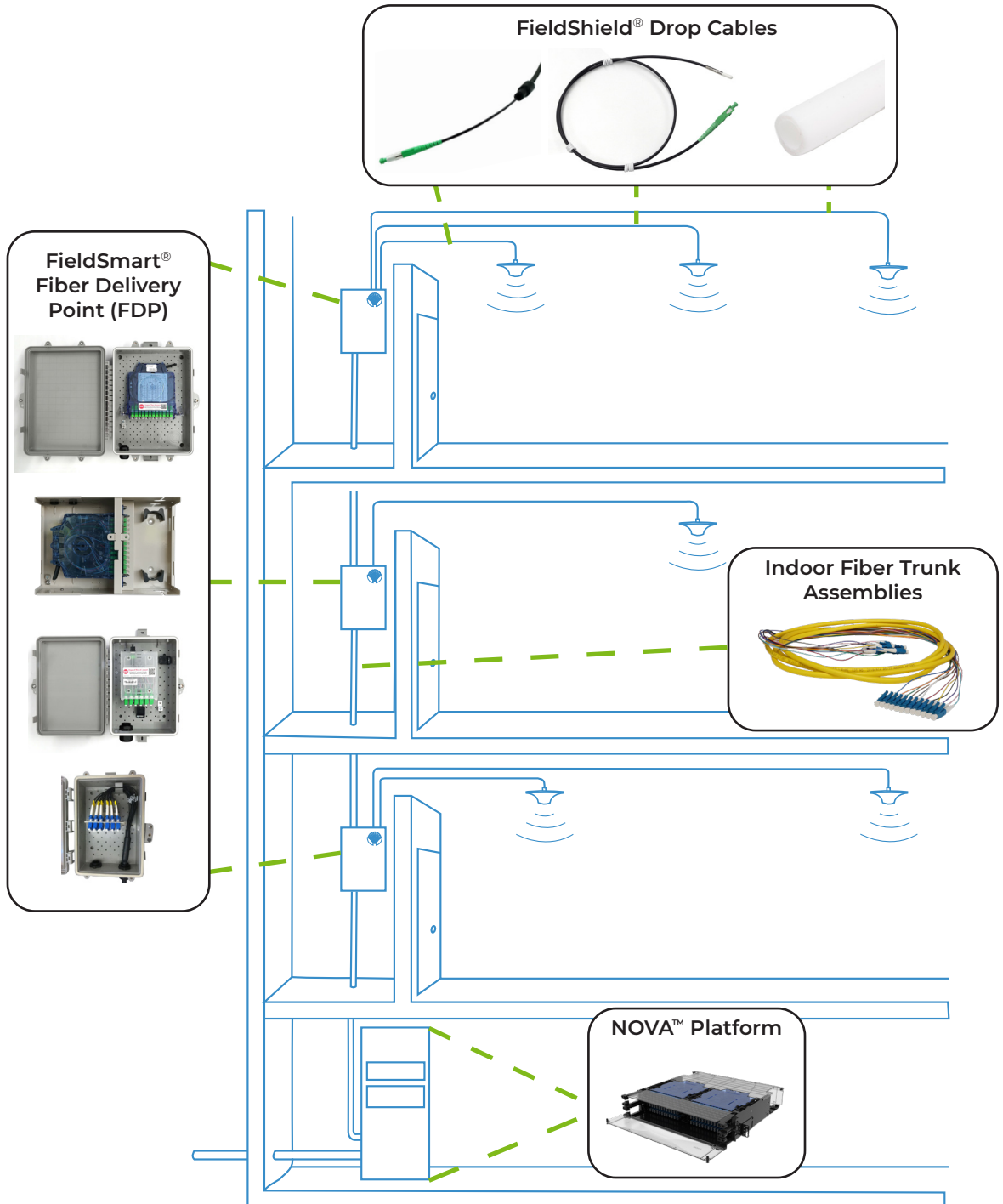
CLEARFIELD

# Indoor / Outdoor DAS – Applications Guide



Clearfield® understands that no two DAS deployments are the same. Whether deploying an Indoor DAS system to enhance in-building capacity or an Outdoor DAS network designed to withstand environmental exposure, Clearfield delivers tailored fiber connectivity solutions to meet your specific requirements. From the headend to the antenna – and every connection in between – Clearfield provides a complete, scalable fiber solution.

# Indoor DAS Deployment (iDAS)

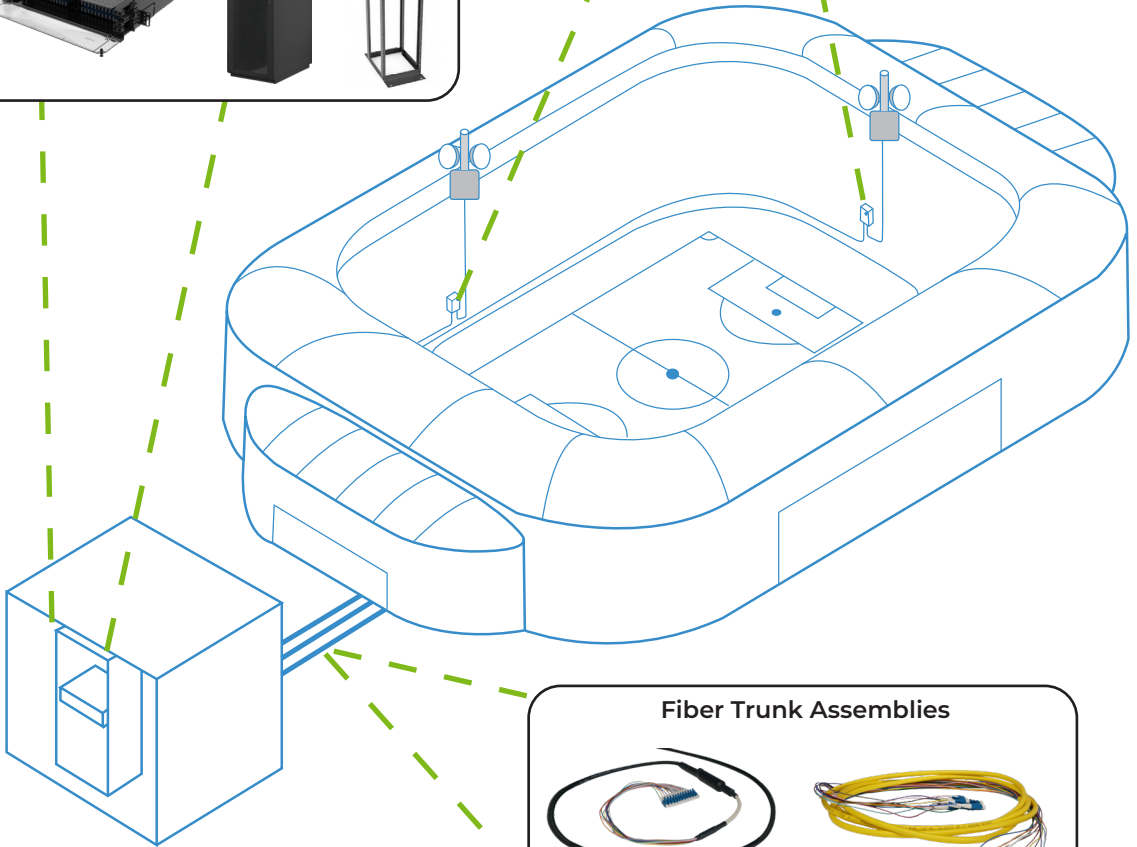
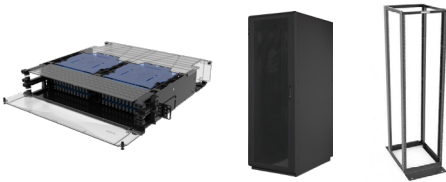


# Indoor/Outdoor DAS Deployment

FieldSmart Fiber Delivery Point (FDP) & FieldShield Drop Cables



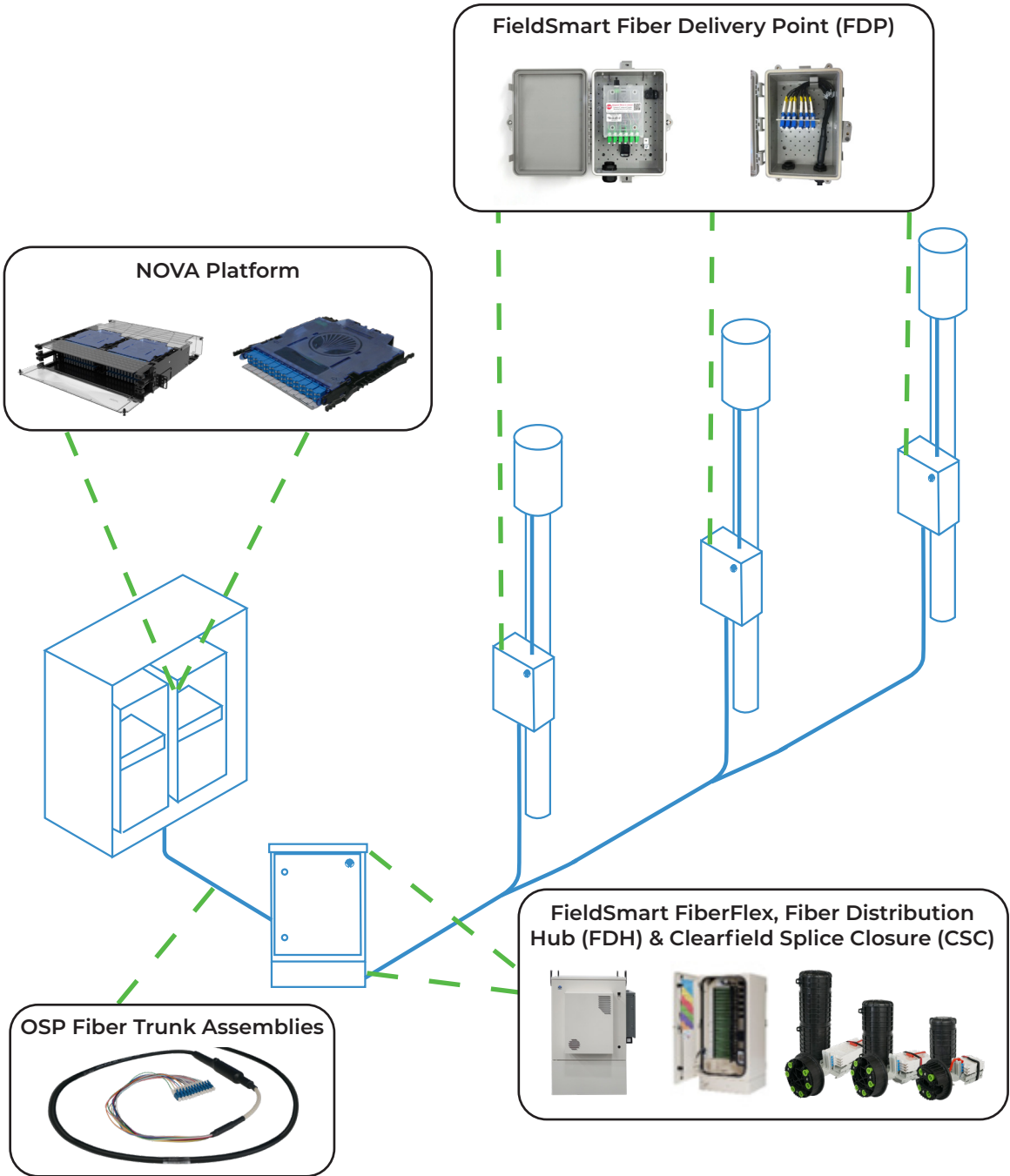
NOVA Platform





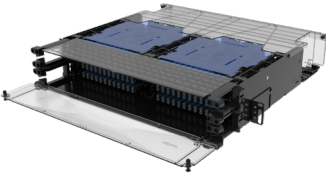
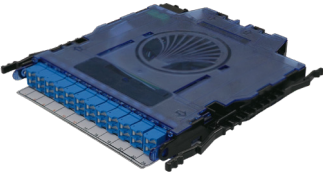
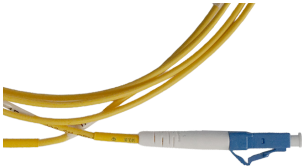
Fiber Trunk Assemblies




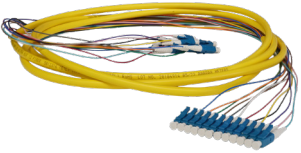
# Outdoor DAS Deployments






# Head End

<p><b><u>NOVA 4-Post Racks</u></b></p>  A tall, black, rectangular metal frame with four vertical posts and a base, designed for rack mounting.	<ul style="list-style-type: none"><li>• 19", 23", 24" and 28" rack mount available</li><li>• Standard square hole mounting</li><li>• Lightweight 6063 T5 welded rugged frame</li><li>• Turn-key solution built to meet the demands of modern IT infrastructure</li></ul>
<p><b><u>NOVA Network Cabinet</u></b></p>  A tall, black, rectangular network cabinet with a front door and a base.	<ul style="list-style-type: none"><li>• Available in a variety of width and depth combinations</li><li>• Two pairs of fully adjustable vertical mounting rails</li><li>• Lightweight 6063 T5 welded rugged frame</li><li>• Provides ample cable management space and efficient, streamlined airflow</li></ul>
<p><b><u>NOVA HD Fiber Panels</u></b></p>  A high-density fiber panel with a metal frame and a front door, showing multiple fiber ports.	<ul style="list-style-type: none"><li>• Available in 1RU, 2RU and 4RU Increments</li><li>• Port Density: 96 ports per RU (LC)</li><li>• Innovative high-density fiber management and protection</li><li>• Utilizes innovative NOVA Cassettes</li></ul>
<p><b><u>NOVA Cassettes</u></b></p>  A blue, square-shaped fiber cassette with a fan-like design on top and fiber ports on the bottom.	<ul style="list-style-type: none"><li>• Designed for efficient space usage in NOVA panels</li><li>• Clearfield's innovative high density cassette footprint</li><li>• Built-in fiber designation</li><li>• Utilizes slidable locking clips for easy installation and removal</li></ul>
<p><b><u>Fiber Jumper Cables</u></b></p>  A yellow fiber jumper cable with a blue connector and a white protective sleeve.	<p>Options Include:</p> <ul style="list-style-type: none"><li>• Bend Insensitive Fiber Jumper Cables</li><li>• Standard Indoor Fiber Jumper Cables</li><li>• Offered in a variety of lengths, connector types and cable types</li></ul>

# Fiber Trunk Cables

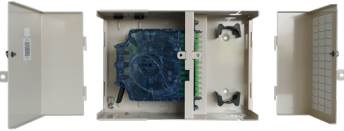
<p><u>OSP Fiber Trunk Assemblies</u></p>  A black fiber optic cable with a blue MPO connector on one end and a black connector on the other, coiled in a loop.	<ul style="list-style-type: none"><li>• Fiber counts from 2-fiber to 288-fiber</li><li>• Cable types include Outdoor (Riser/Non-Rated) and Outdoor Armored (Riser/Non-Rated)</li><li>• A variety of lengths and configurations available</li><li>• Supports all standard connectors including MPO</li></ul>
<p><u>Indoor Fiber Trunk Assemblies</u></p>  A yellow fiber optic cable with multiple blue MPO connectors on one end, coiled in a loop.	<ul style="list-style-type: none"><li>• Fiber counts from 2-fiber to 144fiber</li><li>• Cable types include Indoor Riser, Indoor Plenum</li><li>• A variety of lengths and configurations available</li><li>• Supports all standard connectors including MPO</li></ul>

# OSP Cabinets and Closures

<p><u>FieldSmart FiberFlex Active Cabinets</u></p>  Two white, rugged outdoor fiber optic cabinets, one shown from the front and one from the side.	<ul style="list-style-type: none"><li>• Rugged GR-487, NEMA 4X rated enclosure</li><li>• Various integrated power and cooling options</li><li>• Industry leading connectivity solutions utilizing Clearview Cassettes</li></ul>
<p><u>FieldSmart Fiber Distribution Hub (FDH) Cabinets</u></p>  Two white fiber optic cabinets with their doors open, showing internal fiber management components and cassettes.	<ul style="list-style-type: none"><li>• Rugged GR-3125 rated enclosure</li><li>• Integrated fiber management and protection utilizing Clearview Cassette</li><li>• Industry leading splitter management and port designation for larger density deployment requirements</li></ul>
<p><u>Clearfield Splice Closure (CSC)</u></p>  Three black, cylindrical fiber optic splice closures of different sizes, some with green labels, and their associated components.	<ul style="list-style-type: none"><li>• Craft friendly splice closure supporting a variety of deployment densities</li><li>• Aerial, underground and pole mount supported</li><li>• Rugged closure tested and certified to GR-771 and IP68 standards</li></ul>

# Termination Access & Distribution

## Fiber Delivery Point (FDP) Indoor Wall Box



- Available in 36, 96 and 144 sizes using Clearview Cassette
- Craft separation in two compartments (splicing and connectors)
- Rugged steel construction with security enabled doors provide protection from tampering or inadvertent damage

## Fiber Delivery Point (FDP) Outdoor Wall Box



- Available in two sizes, small to accommodate xPAK (6 ports) or factory installed cable assembly with adapter plate (up to 24 ports LC). Large can accommodate up to 2 Clearview Cassettes (12 or 24 ports)
- NEMA 4 rated for any harsh outdoor environment

# Fiber Drop Cables and Microduct

## FieldShield FLATdrop



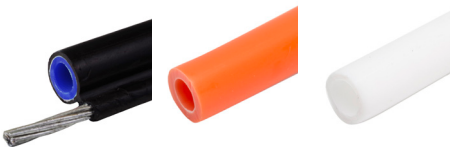
- Pre-connectorized flat drop style cable to provide hardened environmental performance on a peelable flat drop style cable
- FLATdrop peelable cable allows for the outer jacket to be stripped back to expose the more flexible 3mm sub-unit or 900um sub-unit, easing storage of terminated ends

## FieldShield FLEXdrop®



- Tech-friendly drop cable with pre-terminated pushable connectors rapidly decrease deployment times and reduce installation costs by eliminating in-field splicing
- Pushable drop assemblies for use with FieldShield Microduct

## FieldShield Microduct



- Robust protection from the elements for non-ruggedized fiber drops
- Options available include Aerial, Direct Bury, Plenum and Riser rated
- For use with FieldShield FLEXdrop



Scan for More Wireless  
Product Information.



**CLEARFIELD**

**Learn more at [www.SeeClearfield.com](http://www.SeeClearfield.com)**

P: 800.422.2537

March 2026

*Clearfield, Inc. designs, manufactures and distributes fiber optic connectivity and management products, helping service providers reduce the high costs associated with a fiber optic network to deliver the mobile, residential and business services customers want.*