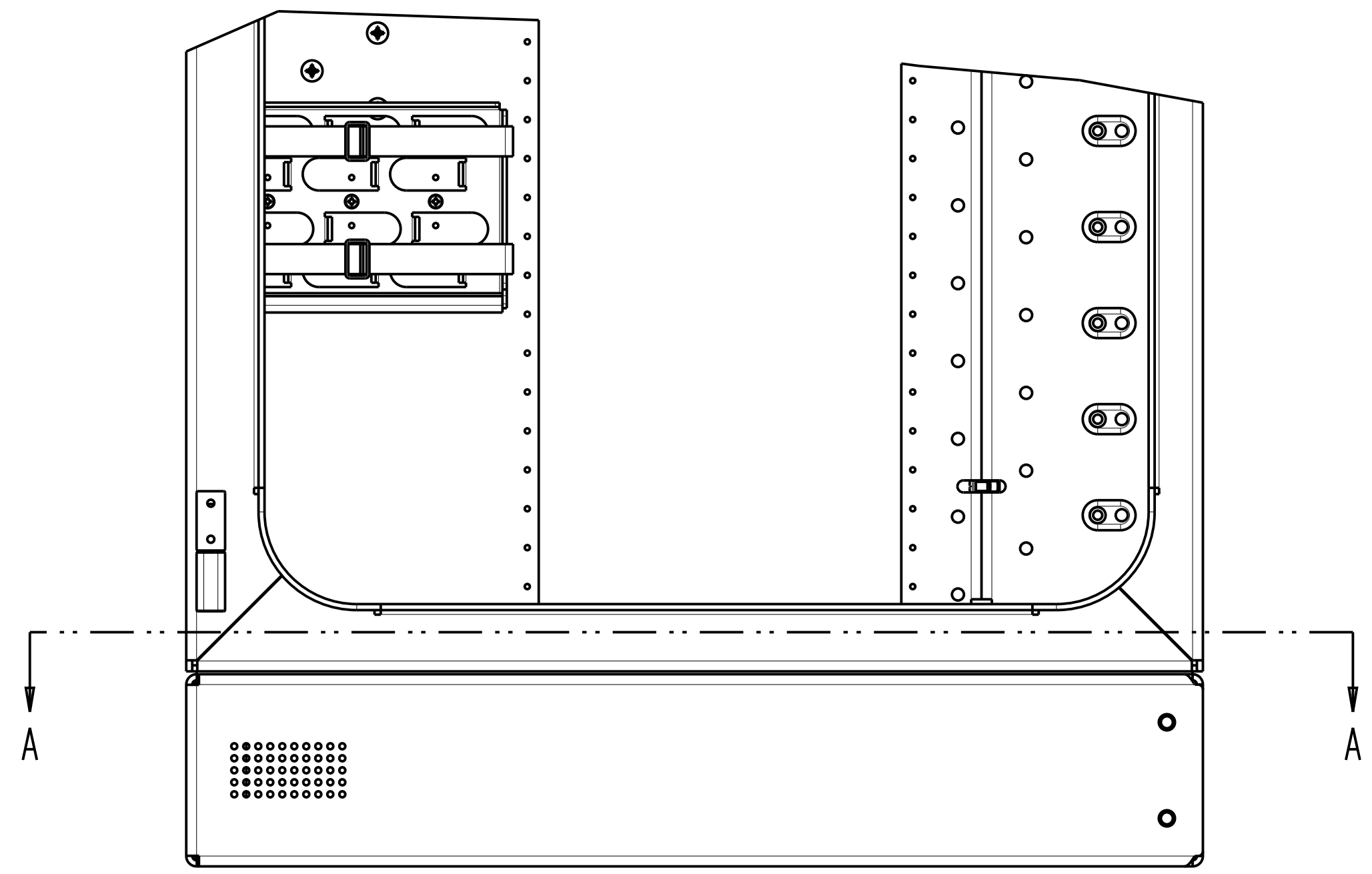
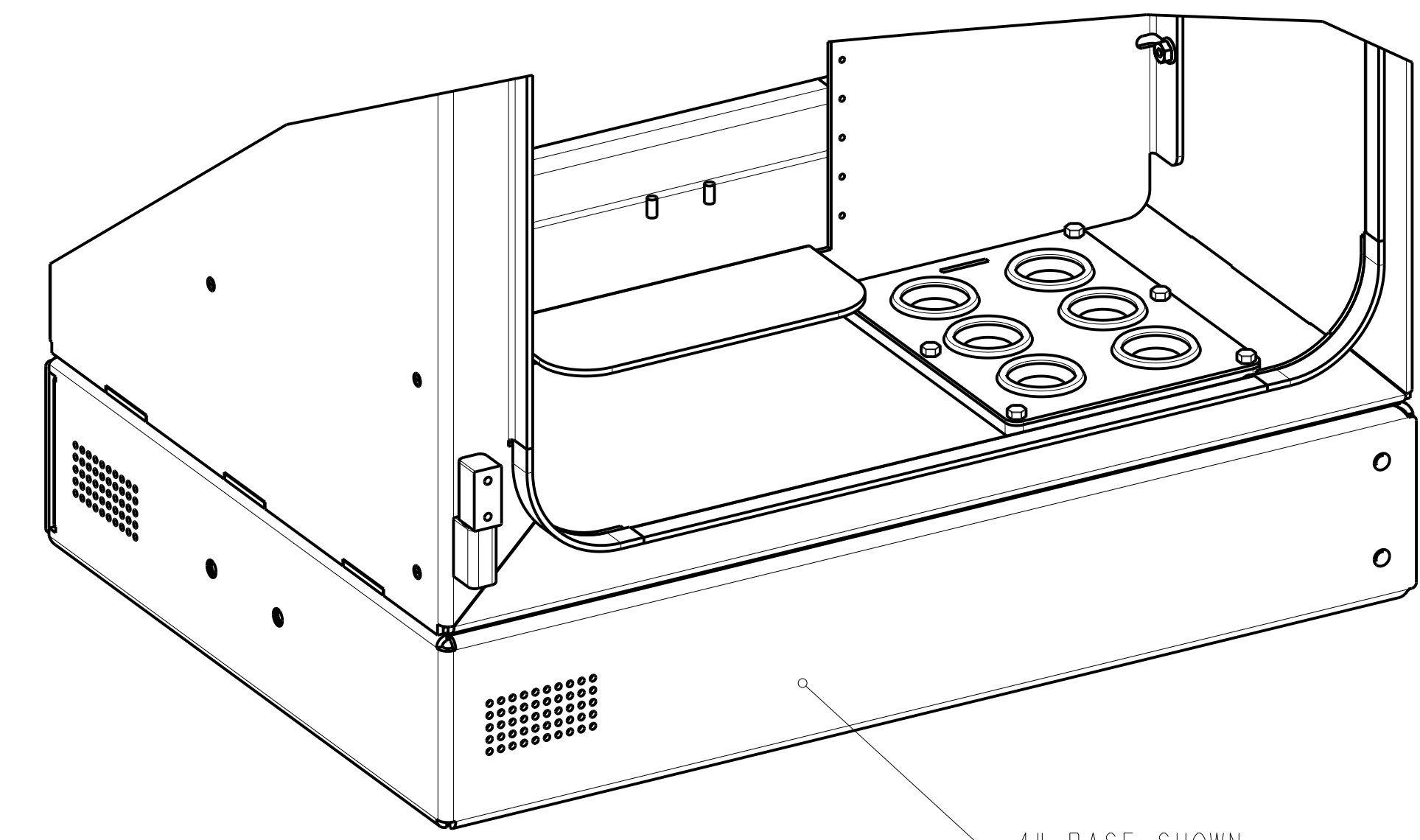


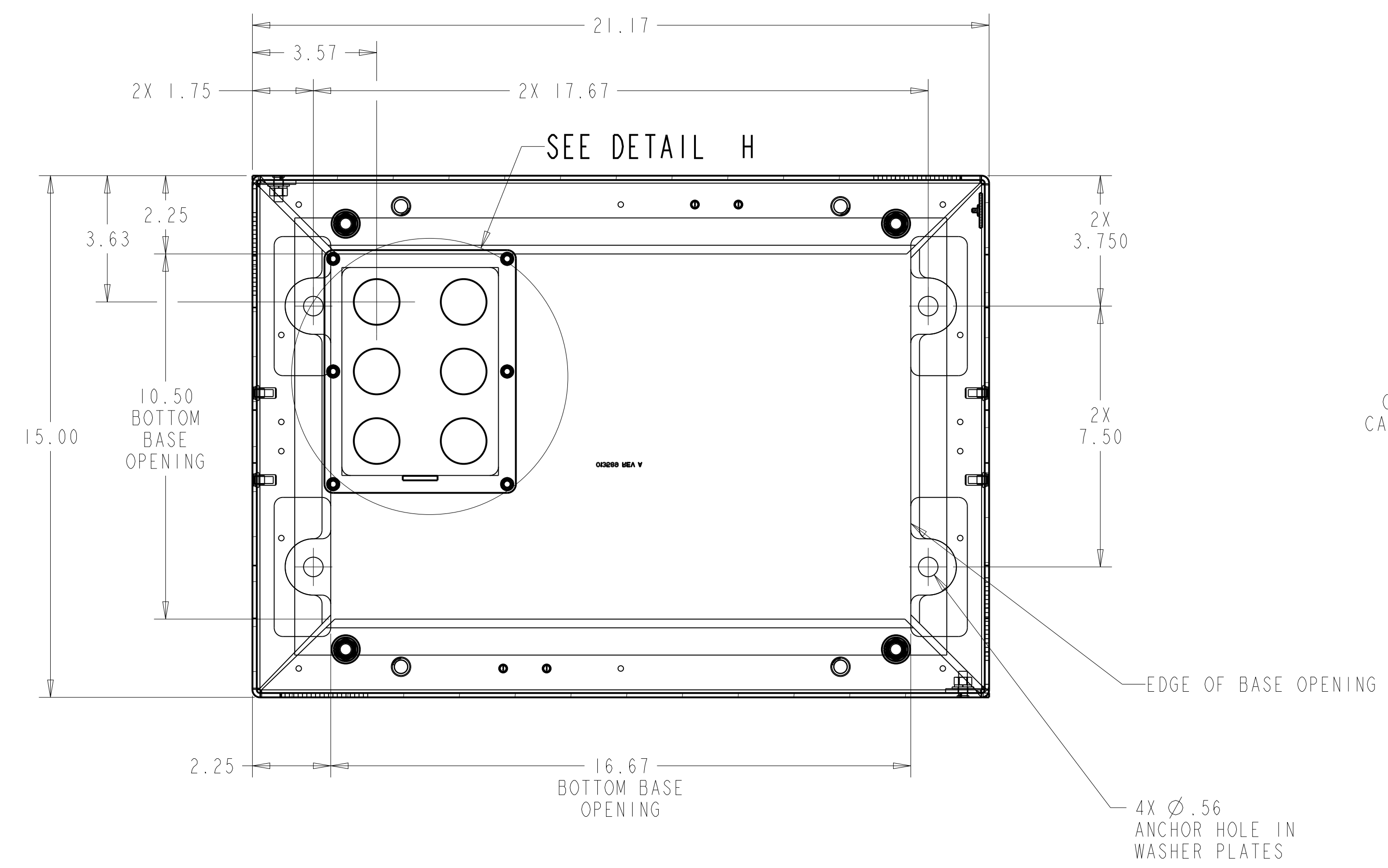
REV	DESCRIPTION OF CHANGE	BY	ECO	REV DATE
D	UPDATED DESCRIPTION, FieldSmart (FSC and FDH) Cabinet Base Installation Diagram - 432 PON WAS FIELDSMART FSC 432 BASE INSTALL. CREATED 6 DIGIT PRT NUMBER 022466 WAS 013588.NEW AND FSC-432-PON-BASE-INSTALL.	RK	1506	04/OCT/21



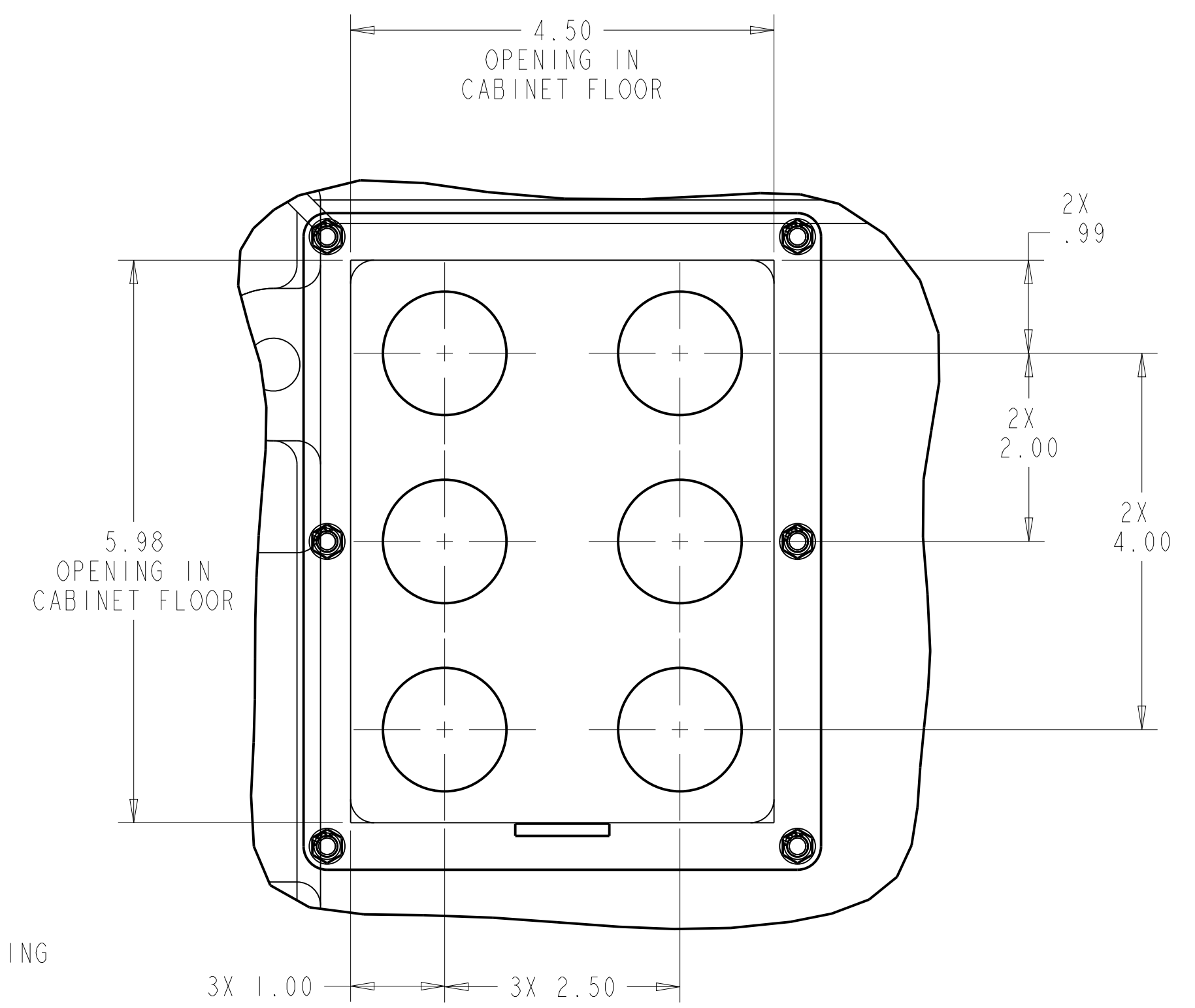
FRONT VIEW



4" BASE SHOWN
PATTERN IS FOR
12" BASE AND 4" BASE



SECTION A-A



DETAIL H
SCALE 0.750

UNLESS OTHERWISE SPECIFIED
ASME Y14.5M - 1994
COPYRIGHT CLEARFIELD INC.
THIS DOCUMENT IS THE
PROPERTY OF CLEARFIELD INC.
ITS USE IS AUTHORIZED ONLY FOR
RESPONDING TO A REQUEST FOR
QUALIFICATION OR THE PERFORMANCE
OF WORK FOR CLEARFIELD INC. ALL
QUESTIONS SHOULD BE DIRECTED TO
CLEARFIELD INC. ENGINEERING DEPT
DO NOT

MATERIAL:
ASSEMBLY COMPONENT
FINISH:
ASSEMBLY COMPONENT
DESIGNED BY: RK 04-OCT-21
DRAWN BY: RK 04-OCT-21

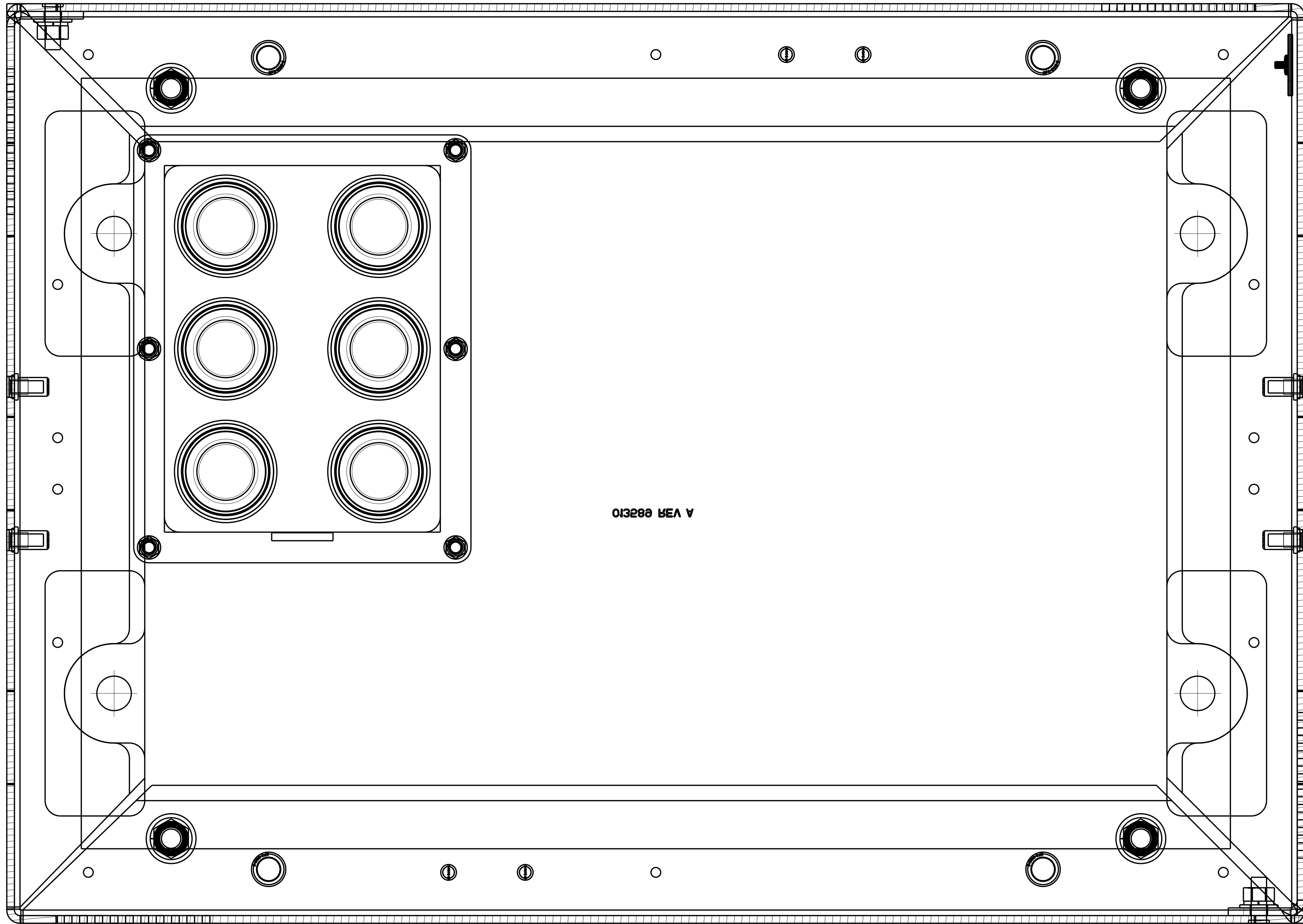
CLEARFIELD
7050 WINNETKA AVE N STE 100
BROOKLYN PARK, MN 55428
(800) 427-2937 (763) 478-6866
www.seeclearfield.com

FieldSmart (FSC and FDH) Cabinet Base
Installation Diagram - 432 PON

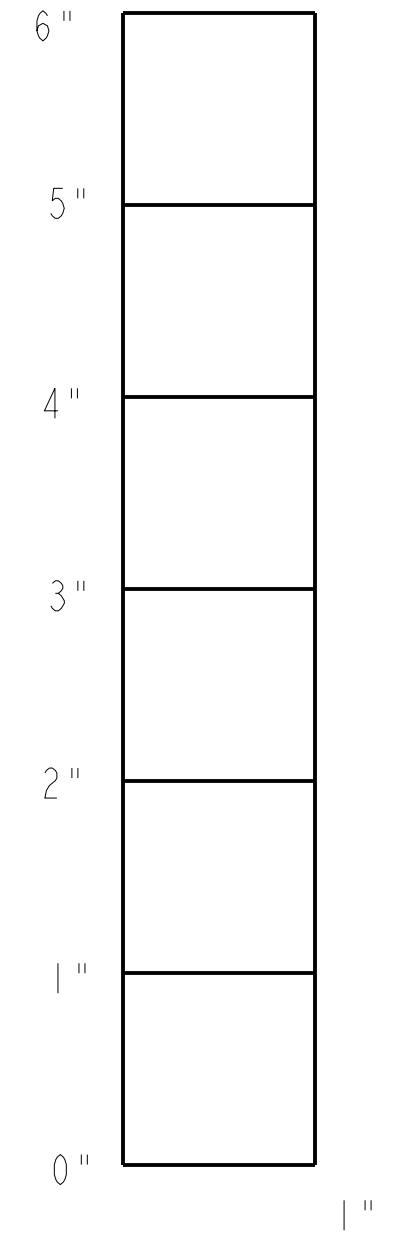
SIZE	DRAWING NO:	PART NUMBER:	REV.
D	022466	022466	D

SCALE: 0.375 SHT 1 OF 2

APPROVED
By tbade at 9:44 am, Oct 15, 2021



013288 MEA A



SCALE CHECK

SECTION A-A
FULL SCALE LAYOUT
SCALE 1.000

UNLESS OTHERWISE SPECIFIED
ASME Y14.5M - 1994
X.X +/- 0.1
X.XX +/- 0.01
X.XXX +/- 0.005
MACH ANG ± 0°30'
FORMED ANG ± 2°
CHAMFER ± 3°
BREAK EDGES:
R.01 ON 45 ± .01 MAX
INTERNAL MACH R.02 MAX
DIMENSIONS ARE IN INCHES
DO NOT SCALE DRAWING

MATERIAL:
ASSEMBLY COMPONENT
FINISH:
ASSEMBLY COMPONENT
DESIGNED BY RK 04-OCT-21
DRAWN BY RK 04-OCT-21
APPROVED BY

CLEARFIELD
7050 WINNETKA AVE N STE 100
BROOKLYN PARK, MN 55428
(800) 427-2537 (763) 478-6866
www.seeclearfield.com

FieldSmart (FSC and FDH) Cabinet Base
Installation Diagram - 432 PON

SIZE	DRAWING NO:	PART NUMBER:	REV.
D	022466	022466	D

SCALE: 1.000 SHT 2 OF 2