

Application

When the network deployment plan calls out for an aerial application, Clearfield's StreetSmart Aerial FDH - 288 provides an interconnect environment from the feeder network through the optical passive splitter to the distribution network. Designed specifically for aerial/strand mount applications in the outside plant environment, these enclosures provide a single distribution point to distribute FTTH in rural, urban or dense neighborhoods.

Description

The StreetSmart Aerial FDH - 288 is the complete solution for managing up to 288 port distribution fibers for an outside plant FTTx PON application. Factory pre-terminated (1-288 or 1-144) fiber cables eliminates splicing at the terminal and allows the service provider the ability to define and assign the feeder and distribution ports, customizing to each individual deployment.

The Aerial FDH has been designed for aerial or strand mount fiber deployment within the network architecture. The Aerial FDH includes 2 individual hinged covers with four side entrance cable access ports – two on each end.

The factory installed, pre-terminated OSP cable is spliced on the back side of the unit and is separated and secured from the craft accessible feeder and distribution connection ports, located in the front of the enclosure.

The compact design of the Aerial FDH incorporates individual blocks of 12 LC/APC adapters that are housed in multiple sized faceplates, providing maximum configuration capabilities. The symmetrical design of the unit incorporates fiber management and bend-radius protection for all fibers being deployed.

The Aerial FDH has room to hold up to 9 individual compact ruggedized splitter modules, allowing the service provider to add splitters as needed, growing as they go to minimize investment in capital equipment related to the turn-up of revenue-generating circuits. The Aerial FDH is a sealed, free breathing enclosure that provides protection in the harshest OSP environments.

Features and Benefits

Integrity

- Terminations designed, tested and certified to Telcordia GR-326
- Fiber cable certified to GR-20 and GR-409
- Aerial FDH designed, tested and certified to GR-3125
- 100% performance tested for insertion loss, return loss and final mechanical inspection

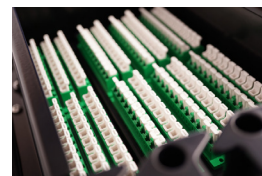
Protection

- Black UV resistant thermoplastic designed to resist corrosion
- Sealed-free breathing terminal provides durability and protection in the OSP environments
- Separate secure splice chamber, provides protection and security of incoming and outgoing fibers

Access

- Four individual secure compartments (2 each - front and rear), separate splices from the drop ports, providing network security
- Hinged front covers allows easy access for installation and network maintenance
- 4 cable entrance/exit ports – 2 on each end
- Factory terminated single 288 cable allows provider to determine assignment of individual feeder and distribution ports
- Factory installed fiber tail, available in multiple lengths
- Will accept up to 9 individual compact ruggedized splitter modules
- Designation card included

Investment



- Customer defined configurations - provides maximum scalability across multiple services classes
- “Grow-as-you-go” capabilities
- Pre-terminated factory polished pigtail assembly - ensures improved network operability when spliced onto the feeder cable

Technical Specifications

StreetSmart Aerial FDH - 288	
Dimensions	29.75" L x 11.97" H x 9.62" D (755.65 mm x 304.04 mm x 244.35 mm) * height includes strand bracket
Material	Black UV Resistant Thermoplastic
Weight	Approx. 30 lbs.
Feeder/Express Ports	24-48 ports
Distribution Ports	144-288 ports
Cable Entrances	4 – 2 on the left, 2 on the right (Cables can exit on one side only)
Mounting Options	Aerial or Strand Mount
Splitter Slots for WaveSmart Splitters	9 WaveSmart Splitter Modules, One 1x32 Splitter, LC/APC Front Pigtail Input(s) and Outputs, Bend Insensitive Fiber, 1.2mm Legs, 125 x 58.4 x 10 mm
Connector Types	LC/APC, LC/UPC
Cable Types	144/288 OSP fiber Ribbon Outdoor (Non-Rated)
Factory Terminated Fiber Tails 48 Fiber Feeder and 288 Fiber Distribution	Available from 100 to 500 Foot Lengths
Staging Plates	Staging plate 021572, comes with splitter module. Capacity 2 staging plates - will accept up to 72 unused splitter legs
Splice Trays	5 Trays, 72 Per Tray - 360 Max. Capacity

Configured Part Numbers

Disclaimer/Note: Paper configurator shown is for reference only and should not be used to configure a saleable product configuration. All options shown on paper configurators may not be available or compatible with other options listed. Please contact your Clearfield representative for assistance in product configurations.

R - W W
-
-
-
-
-
-
-
-
-
XXXM or XXXF

1

2

3

4

5

6

7

8

9

10

1 Select Feeder
2 = 24 in 2 cassettes
4 = 48 in 4 cassettes

2 Select Distribution Port Count
144 = 144
288 = 288

3 Select Connector
F = LC/UPC DX
H = LC/APC DX

4 Select Mode / Type
2 = Singlemode – ribbon

5 Select Jacket Construction
E = OSP, Non-rated

6 Select Qty. of 288/216 Fiber OSP Cables
0 = 0
1 = 288

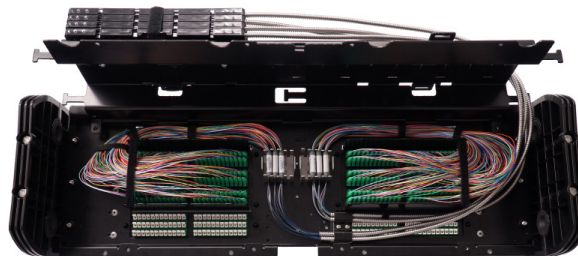
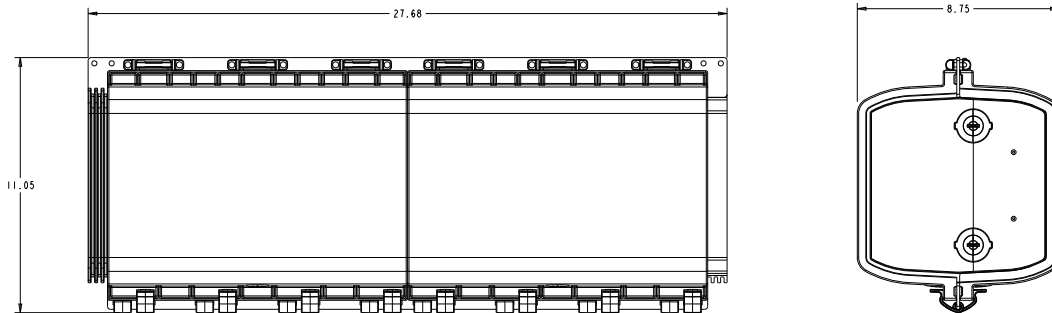
7 Select Qty. of 144 Fiber OSP Cables
0 = 0
1 = 144

8 Select Qty. of 96 Fiber OSP Cables
0 = 0

9 Select Qty. of 72 Fiber OSP Cables
0 = 0

10 Other Options
A = Right Exit - Default
B = Left Exit

XXXM or XXXF
XXXM = Length in meters
XXXF = Length in feet



Ruggedized Splitter Module:

Part number - KK1-GAA

Ruggedized Compact Splitter Module, One 1x32 Splitter, LC/APC Front Pigtail Input(s) and Outputs, Bend Insensitive Fiber, 1.2mm OSP Yellow Jacket, 125 x 58.4 x 10 mm, includes staging plate - 021572

