

Clearfield®

MPO Indoor Trunk Cable Assemblies



Application

Clearfield® MPO indoor trunk cable assemblies are used to connect different elements in the data center cabling system infrastructure and for central office trunking. They can be used in cabinet-to-cabinet connections or to connect functional elements. These high-density, low-loss cable assemblies can be used in horizontal cabling, backbone cabling, cross-connects and equipment outlets.

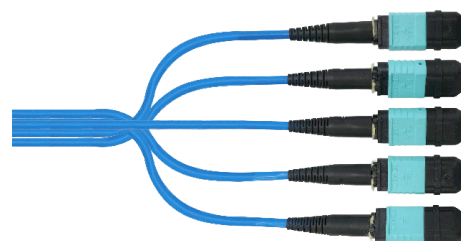
Description

Clearfield MPO indoor trunk cables utilize 250µm bend-improved fibers inside 2mm or 3mm subunits. Fiber counts range from 12 to 144 fibers in multimode and singlemode fiber types (OM2, OM3, OM4, OM5 and OS2). Cables can be provided with low-loss MPO connectors on both ends, MPO-to-LC breakouts and MPO pigtailed. Singlemode and multimode fibers can be mixed within the cable, if required.



Features and Benefits

- Terminations are designed and tested to Telcordia GR-1435 and ANSI/TIA-568.3-D to ensure reliable long-term performance.
- Fiber bundles are individually jacketed in 2mm or 3mm sub-units, then provided an outer jacket for superior mechanical and environmental protection.
- Bend-improved fiber allows tighter cable bends for routing and slack storage.
- Cables, connectors and connector boots are color-coded per ANSI/TIA-568.3-D for easy identification and organization.
- Optional pulling eye kits are provided to protect cable ends and connectors during installation.
- Compact cable design saves space in the pathway and minimizes cable pile up.
- All assemblies are factory terminated and factory tested to ensure consistent, reliable performance for years to come.
- Factory test results are included with each cable to support network documentation.
- Clearfield's FiberDeep® ultra-low insertion loss guarantee optimizes network design flexibility.
- Assemblies comply with ANSI/UL 1666 and UL 910 for Riser (OFNR) and Plenum (OFNP) applications to protect against flame propagation. Assemblies also carry the CE mark for CPR harmonization.



Technical Specifications

MPO Indoor Trunk Cable Assemblies	
Fiber Type	OM2, OM3, OM4, OM5 and OS2
Fiber Diameter	250µm
Fiber Counts	12 to 144
Cable Type	Micro-Distribution Cable with 2mm or 3mm Sub-units
Flame Rating	Riser (OFNR), Plenum (OFNP) and CPR
Operating Temperature	-20°C to 70°C (-4°F to 158°F)
Storage Temperature	-40°C to 75°C (-40°F to 167°F)
Breakout Length	0.5 meter (20"), 1.0 meter (39"), custom options available
Polarity	Method A, Method B

Clearfield®

MPO Indoor Trunk Cable Assemblies



Terminated Multimode Connectors

Connector Type	Ferrule Material	Polish Type
MPO 12-Fiber	Ceramic	UPC
MPO 12-Fiber	Ceramic	APC
MPO 24-Fiber	Ceramic	UPC
MPO 24-Fiber	Ceramic	APC
LC	Ceramic	UPC
LC	Ceramic	APC
SC	Ceramic	UPC
SC	Ceramic	APC

Terminated Singlemode Connectors

Connector Type	Ferrule Material	Polish Type
MPO 12-Fiber	Ceramic	UPC
MPO 12-Fiber	Ceramic	APC
MPO 24-Fiber	Ceramic	UPC
MPO 24-Fiber	Ceramic	APC
LC	Ceramic	UPC
LC	Ceramic	APC
SC	Ceramic	UPC
SC	Ceramic	APC

Color Codes

Cable Jackets	Color
OM3 & OM4 50/125µm	Aqua
OM5 50/125µm	Lime Green
OS2 9/125µm	Yellow

Connectors	Color
OM3 & OM4 50/125µm	Aqua
OM5 50/125µm	Lime Green
OS2 9/125µm	Yellow

MPO Connector Boots	Multimode	Singlemode
8-Fiber	Gray	Gray
12-Fiber	Aqua	Black
24-Fiber	Red	Red