

FieldSmart® Fiber Crossover Distribution System (FxDS) Fiber Entrance Cabinet (FEC)



Application

The FieldSmart Fiber Entrance Cabinet (FEC) provides off-frame splicing for the central office, headend or remote hut. Fiber Entrance Cabinets are typically placed in the fiber entrance room and used to transition OSP fiber sheaths to IFC cabling.

Description

The FieldSmart FEC is built on a modular platform scaling 288 heat shrink fusion (HSF) or 864 mass fusion (ribbon) fiber splices at a time. Multiple entry/exit points allow for multiple distribution and OSP fiber sheaths to enter into the FEC from top, bottom or sidewalls and transition from conduit, overhead fiber tray or raised flooring. A removable splice block, holding twelve 24-fiber splice trays allows the user access and the ability to prep away from the cabinet. Intuitive buffer tube and sub-unit slack routing prevents cable tie-in with a clockwise routing scheme to allow quick and easy re-entry after initial deployment or to add additional capacity. If vertical real estate is available, the FEC can be ganged together, in modular fashion, allowing scalability up to 864-fiber splices and beyond.

Each cable entrance plate will support cable diameters up to one inch. Lockable cupboard style doors allow for easy access with minimal swing clearance needed for tight aisle clearances.



Features and Benefits

Integrity

- Industry standard splice tray
- Sturdy construction using 16 gauge steel

Protection

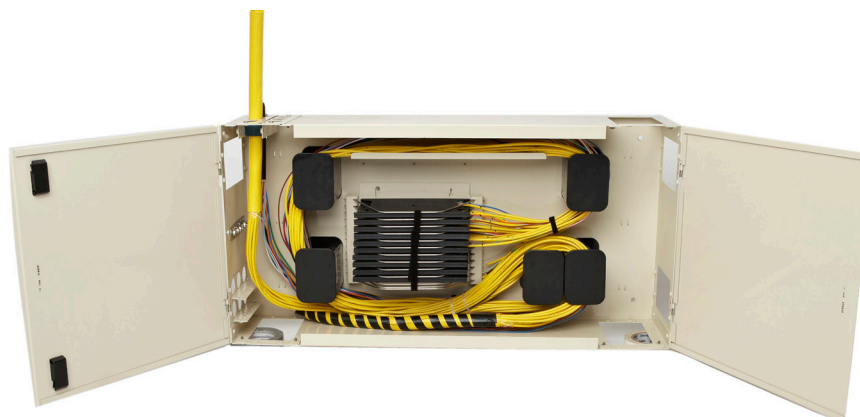
- Piano hinged doors, with removable hinge pin provides extra stability
- Ruggedized cable clamps protect against twisting and pistoning at the assembly breakout point
- Full bend-radius protection throughout cabinet

Access

- Multiple entry/exit points allow distribution and OSP fiber sheaths to enter from top, bottom or sidewalls
- Cable entrance plates support cable diameters up to one inch
- Removable splice trays provide technicians access to prep outside of the cabinet
- Intuitive, clockwise fiber management routing scheme prevents cable tie-in
- Ability to store five meters of exposed buffer tubes
- Removable hinge pin allows for easy door removal

Investment

- Splice trays supports both loose tube and ribbon constructions for single and mass fusion (ribbon) splicing
 - Maximum of 24 splice per tray LT (288)
 - Maximum of 72 splice per tray RB (864)
- FECs can be ganged together in a modular fashion when vertical real estate space permits



FieldSmart[®] Fiber Crossover Distribution System (FxDS) Fiber Entrance Cabinet (FEC)



Technical Specifications

FieldSmart FxDS Fiber Entrance Cabinet	
Dimensions	17.5" H x 34.5" W x 8.25" D (444.50 mm x 876.30 mm x 209.55 mm)
Ratings	Compliant to Telcordia GR-449
Cable Types	Indoor Riser, Indoor Plenum, Indoor/Outdoor, Outdoor (Riser/Non-Rated), Outdoor Armored (Riser/Non-Rated), FieldShield [®]
Splice Capacity	288 heat shrink fusion (HSF) loose tube or 864 mass fusion (MF) ribbon splices
Storage Capacity	One meter of 900 μ m fiber and five meters of exposed buffer tube
Material	16 gauge cold rolled steel with almond powder coating

Pre-Configured Part Numbers

Part Number	Description
009894	Fiber Entrance Cabinet - 288 splice capacity (Includes one clamp kit. No splice trays.)
019339	Splice Tray for FEC - 24 heat shrink fusion (HSF) or 72 MF mass fusion (MF)
010505	Clamp Kit (includes four clamp plates, four 1/2" (12.70 mm) clamps, four 1" (25.40 mm) clamp plugs and appropriate hardware)
010503	Locking Kit

