




# FieldSmart®

## SCD-TAP Home Deployment Kit

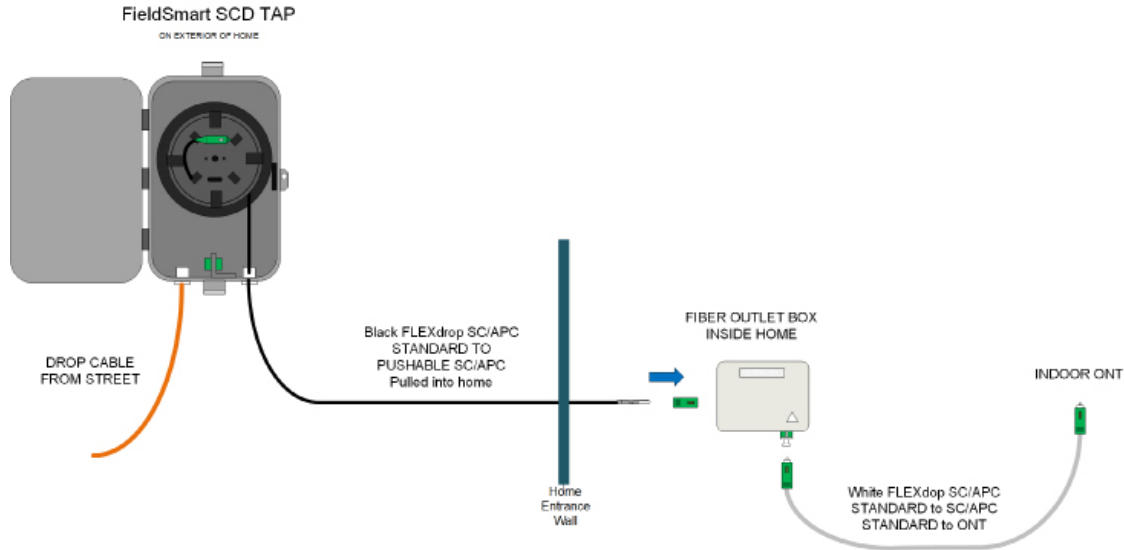


### Application

FieldSmart SCD-TAP Home Deployment Kit (HDK) extends Clearfield's field-proven fiber management expertise and leading-edge fiber connectivity performance all the way into the home. With the FieldSmart SCD-TAP, the Home Deployment Kit packages the required patch cords, fiber jack (Clearfield's CraftSmart Fiber Outlet) and necessary adapter installation accessories in a single box. Truck rolls are minimized and customer turn-up is rapid. Choose the FieldSmart SCD-TAP HDK for environments where plug-and-play along with internal slack storage is desired within the unit mounted outside the home.

FieldSmart SCD-TAP	
<p>The FieldSmart SCD-TAP provides a secure demarcation point between the service provider network and SFU. SCD-TAP gives the network service provider both the ability to store slack fiber as well as provide a test access point (TAP) for ease of deployment and network maintenance without needing to have access to the interior of the customer premise. FLEXdrop Deploy Reel mounts easily on the supplied pin, allowing 100, 150 and 200 feet of pre-connectorized FLEXdrop to be deployed into the premise. With the ability to accept a variety of drop cables, SCD-TAP can be wall or pole mounted, and can be integrated into any network architecture and deployment.</p>	<div style="text-align: right;">  </div> <p><b>Integrity</b></p> <ul style="list-style-type: none"> <li>• Supports industry standard SC adapters</li> <li>• Includes entrance points with multi-purpose strain reliefs</li> </ul> <p><b>Protection</b></p> <ul style="list-style-type: none"> <li>• UV Stable Polycarbonate</li> <li>• Snap and screw latching system</li> </ul> <p><b>Access</b></p> <ul style="list-style-type: none"> <li>• Accepts 10mm microduct, 3mm cable and standard flat drop</li> </ul> <p><b>Investment</b></p> <ul style="list-style-type: none"> <li>• Access available without customer needing to be there to identify potential problems</li> </ul>
CraftSmart Fiber Outlet	
<p>The CraftSmart Fiber Outlet can accommodate 4 entrance points for 3mm cable and up to 4 SC adapter ports. The splice tray is hinged and easily removable for non-splicing applications. This small indoor enclosure provides both bend limiting protection and a secure termination point to connect the entrance fiber to the included equipment jumper.</p>	<div style="text-align: right;">  </div> <p><b>Integrity</b></p> <ul style="list-style-type: none"> <li>• Supports industry standard SC adapters</li> </ul> <p><b>Protection</b></p> <ul style="list-style-type: none"> <li>• Snap-on cover for dust free protection</li> </ul> <p><b>Access</b></p> <ul style="list-style-type: none"> <li>• Easy installation</li> <li>• Accommodates 4 adapter ports</li> <li>• Four cable entrance points</li> </ul> <p><b>Investment</b></p> <ul style="list-style-type: none"> <li>• Cables can be connected without splicing</li> <li>• Hinged and detachable splice tray</li> </ul>
FieldShield FLEXdrop	
<p>FieldShield FLEXdrop cable has an OSP-rated PVDF jacketing that allows for transition of FLEXdrop from the OSP environment directly into the inside plant, with the added benefit of being UL listed for plenum applications. FLEXdrop can be used as a building wrap at turn-up, maximizing installation efficiency.</p>	<div style="text-align: right;">  </div> <p><b>Integrity</b></p> <ul style="list-style-type: none"> <li>• Available in singlemode</li> <li>• Supports all industry standard connectors</li> </ul> <p><b>Protection</b></p> <ul style="list-style-type: none"> <li>• UL listed for plenum applications for single fiber only</li> <li>• Passed UV testing and measurement standards per ASTM G155 for UL 1581</li> <li>• Bend-insensitive (G.657.A2) fiber protects optical signal with minimal to zero attenuation down to a 10 mm radius</li> <li>• OSP rated PVDF jacketing provides ruggedized protection for the patchcord or pigtail</li> <li>• Staple-ready for walls, joists and around corners, with Crown T-18 staples</li> <li>• Swellable yarns for water blocking capabilities</li> </ul> <p><b>Access</b></p> <ul style="list-style-type: none"> <li>• Standard color is black with an option for off-white</li> <li>• Suitable for all types of indoor and outdoor implementations (duct required for aerial and direct bury)</li> </ul> <p><b>Investment</b></p> <ul style="list-style-type: none"> <li>• Quick and easy deployment allows capital investment to be aligned to customer take rates</li> </ul>

# FieldSmart® SCD-TAP Home Deployment Kit



## Technical Specifications

FieldSmart SCD-TAP	
Dimensions	12.17" H x 8.62" W x 3.91" D (309.12mm x 218.95mm x 99.31mm)
Color	Gray
Rating	GR-771 and Designed for NEMA-4
Material	UV Stabilized, Flame Retardant Polycarbonate
Adapter Style Receptacle	SC/APC and SC/UPC
Port Count	1
Seals	2 Split Seals for 3mm OD Cable
Mounting Options	Wall or Pole Mount

CraftSmart Fiber Outlet	
Dimensions	3.9 x 3.2 x 1.25 inches (100 x 80 x 32 mm)
Color	White
Operating Temperature	-20°C to 60°C
Material	ABS
Adapter Style Receptacle	SC and LC
Adapter Slots	4 Slots
Accessories	Removable Storage Tray

# FieldSmart®

## SCD-TAP Home Deployment Kit



FieldShield FLEXdrop	
Fiber	Corning ClearCurve Optical Fiber or equivalent
Clad Diameter	125.0 ± 0.7 μm
Coating Diameter (Uncolored)	235 - 245 μm
Bend-Insensitive	Bend-Insensitive Fiber G.657.A2
Color Code	TIA/EIA 598 (US Standard)
Fiber Count	Single and dual fiber
Pushable Connectors	FieldShield SC/UPC and SC/APC
Standard Connectors	SC/UPC and SC/APC
Mode	Singlemode
Internal Fiber Size	900 μm
Outside Diameter	0.118" (3 mm)
Color	Black or white
Material	PVDF
Bend-Radius	Standard to G.657.A2 specifications
Installation Temperature	-22°F to 131°F (-30°C to 55°C)
Operating Temperature	-40°F to 176°F (-40°C to 80°C)
Installation Tension	20 lbf
Markings	Part number, lot number and footage markers every two feet (609.60 mm)
Cable Attenuation Spec	0.35 dB/km @ 1310 nm/0.25 dB/km @ 1550 nm
Recommended Drop Length	150 feet (45.72 m) or less for normal installation conditions

### Home Deployment Kit Includes:

- FieldSmart SCD-TAP
- CraftSmart Fiber Outlet
- Black Entrance Cable: FLEXdrop Pushable Fiber (Configurable adapter and lengths)
- White Equipment Cable: FLEXdrop Pushable Fiber (Configurable adapter and lengths)

### Configured Part Number

HDK - D      -      D      -      FW     

1
2
3
4
5
6
7
8
9

**1 Select Box Options**  
A = 50 Foot Storage Reel  
B = 100 Foot Storage Reel  
C = Deploy Reel – Adapter Only  
Z = None

**2 Select Adapter**  
A = SC/UPC  
C = SC/APC

**3 Select Fiber Outlet Adapter**  
A = SC/UPC  
C = SC/APC

**4 Select Connector 1 for Entrance**  
A = SC/UPC  
C = SC/APC

**5 Select Connector 2 for Entrance**  
B = Pullable SC/UPC  
D = Pullable SC/APC

**6 Select Length**  
6 = 100 Ft. Reel  
7 = 150 Ft. Reel  
8 = 200 Ft. Reel

**7 Select Connector 1 for Equipment**  
A = SC/UPC  
C = SC/APC

**8 Select Connector 2 for Equipment**  
A = SC/UPC  
C = SC/APC

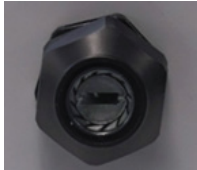
**9 Select Length**  
1 = 10 ft.  
2 = 15 ft.  
3 = 25 ft.

# FieldSmart<sup>®</sup>

## SCD-TAP Home Deployment Kit



SCD-TAP



Multi-Purpose Strain Relief



Slack Storage Reel-50 and Slack Storage-100



FLEXdrop Deploy Reel