

FieldSmart® Fiber Scalability Center (FSC)

1728-Port Cross-Connect Cabinet



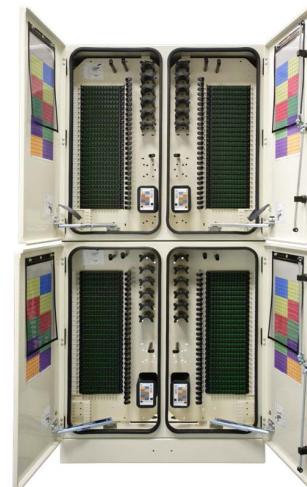
Application

The FieldSmart 1728-Port Cross-Connect Cabinet is the complete solution for managing up to 1,728 fibers in most any feeder/distribution ratio for an outside plant FTTx application. This solution provides an interconnect environment from the feeder network and the distribution field in a FTTH network.

Description

With the Clearview® Cassette as its foundation, the FieldSmart 1728-Port Cross-Connect Cabinet uses the same components as the FieldSmart Fiber Crossover Distribution System (FxDS) deployed in the central office. This enables service providers to standardize on a single building block, allowing them to stock a single fiber management component for either environment. Technicians also have the ease of working with a single fiber architecture for central office or outside plant deployment - saving training and installation time. Using Clearview, the FieldSmart changes the rules of fiber management.

Optimal access is ensured to all ports and superior fiber protection is integrated within the Clearview Cassette. Through the incremental design of the Clearview Cassette, user capacity can be scaled from as few as 12 ports to the maximum configuration of the cabinet, allowing the service provider to align the investment in capital equipment to the turn-up of revenue-generating circuits. Further, labor and other field costs are minimized through this craft-friendly layout.



Features and Benefits

Integrity

- Terminations are designed, tested and certified to Telcordia GR-326
- Clearfield® FiberDeep® Guarantee: 0.2 dB insertion loss or less, exceeding industry standards
- Designed, tested and certified to Telcordia GR-3125
- Constructed with 0.125 (3.125 mm) aluminum
- Powder coated for additional protection
- 300 series stainless steel fasteners used on all cabinets
- Optional 4" and 12" risers, can be stacked to raise cabinet if required

Protection

- 12-fiber Clearview Cassette protects fiber from environmental and human factors
- Rugged cable clamps protect the OSP cable breakouts from twisting and pistoning
- Patch only buffer tubes are fully protected with ruggedized, bend-limiting tubing
- Snake skin sleeving provides additional buffer tube slack storage protection and manageability for patch and splice (Clearfield's in-cassette splicing solution) configurations
- Splitters are built with ruggedized jacketing and bend-insensitive fiber for all input and output legs

Access

- Clearview Cassette allows for quick visual troubleshooting without opening cassette
- Front access to pre-terminated assemblies with Clearview removable adapter plate
- Two captive fasteners for quick removal of individual cassettes for trouble shooting, splicing or replacing
- Front and rear access doors
- Bottom exit/entrance for fiber cables

Investment

- Fiber is deployed in increments of 12, providing the users the ability to scale from 12 ports to full capacity, aligning capital investment with network layout or subscriber revenue
- Express ports allow for extensions or parallel networks through the cabinet
- Patch and splice configurations eliminate costs associated with jacketed IFC cabling, hand-holes and splice cases.

FieldSmart® Fiber Scalability Center (FSC)

1728-Port Cross-Connect Cabinet

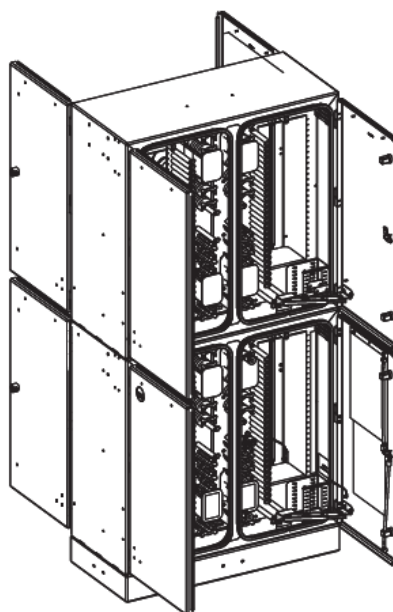


Technical Specifications

FieldSmart 1152-Port PON Cabinet	
Dimensions (without riser)	64" H x 33" W x 16.9" D (1625.60 mm x 838.20 mm x 429.26 mm)
Weight	192 lbs
Port Density	1,728
Feeder/Express Ports	192
Cable Entrances	12
Mounting Options (Hoist kits included with each cabinet)	Vault mount; pad mount
Standard Riser Base	4"; 8 lbs (101.60 mm; 3.63 kg)
Optional Riser Base	12"; 20 lbs (304.80 mm; 9.07 kg)
Splitter Slots	36
Cassette Types Supported	Clearview® Blue
Connector Types	SC/UPC, SC/APC, LC/UPC, LC/APC
Cable Types	Indoor/Outdoor, Outdoor (Riser/Non-Rated), Outdoor Armored (Riser/Non-Rated)
Splice Capacity	12 splices in each Clearview Cassette
Material	0.125 (3.175 mm) aluminum with almond powder coating

Accessories

- Risers: 4" and 12" (101.60 mm or 304.80 mm)
- Exterior Ground Box - Available with 12" Riser Only.
- Mid-Span/Feed-Through Plate Kit



FieldSmart® Fiber Scalability Center (FSC) 1728-Port Cross-Connect Cabinet



Configured Part Numbers

1,728-Port Cabinet

- Please contact your Clearfield® representative for more information on ordering this option.

Vault Options

Part Number	Description
V7A-CZP	Vault, below grade Pencil, 30" W x 48" L x 24" D (762.00 mm x 1219.20 mm x 609.60 mm), split HDPE lid, hex bolts, green, with cut out for FieldSmart cabinets, straight wall, with bolt kit
V7B-CZP	Vault, below grade Pencil, 30" W x 48" L x 36" D (762.00 mm x 1219.20 mm x 914.40 mm), split HDPE lid, hex bolts, green, with cut out for FieldSmart cabinets, straight wall, with bolt kit
V7B-HZP	Vault, below grade Pencil, 30" W x 48" L x 36" D (762.00 mm x 1219.20 mm x 914.40 mm), split PC lid, hex bolts, gray, with knock-out for FieldSmart Cabinets, straight wall, requires 020538 Bolt Kit - ordered separately
V8A-CZP-F	Vault, Pencil 36" x 60" x 24" (914.40 mm x 1524.00 mm x 609.60 mm), complete split lid with ½ cut out for FieldSmart cabinets - with bolt kit, flared wall
V8B-CZP-F	Vault, Pencil 36 x 60 x 36" (914.40 mm x 1524.00 mm x 914.40 mm), complete split lid, with ½ cut out for FieldSmart cabinets - with bolt kit, flared wall

