

# FieldSmart® Fiber Delivery Point (FDP)

## 144 Port PON in Pedestal Insert Kit/Vault Mount



### Application

The FieldSmart Fiber Delivery Point (FDP) 144 Port PON Pedestal Insert Kit/Vault Mount provides splice or interconnect functionality, in industry standard Channell or Pencil pedestals and vaults, for drops to the home in the last mile of the access network. Additionally, it provides for a maximum capacity of 144 homes served, and is configured for PON environments.

### Description

The FieldSmart FDP 144 Port PON Pedestal Insert Kit/Vault Mount provides for a drop cable scenarios in the access network with splicing and/or interconnect connectivity with a Clearview® optimized design. Accepting up to 13 Clearview Cassettes and five WaveSmart® High Density Splitters or WDMs, the insert will scale up to 144 homes served for PON applications.



### Features and Benefits

#### Integrity

- RUS listed
- Terminations are designed, tested and certified to Telcordia GR-326
- Clearfield® FiberDeep® Guarantee: 0.2 dB insertion loss or less, exceeding industry standards
- Inserted into RUS pedestals
- Optical cable designed, tested and certified to Telcordia GR-20

#### Protection

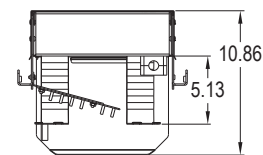
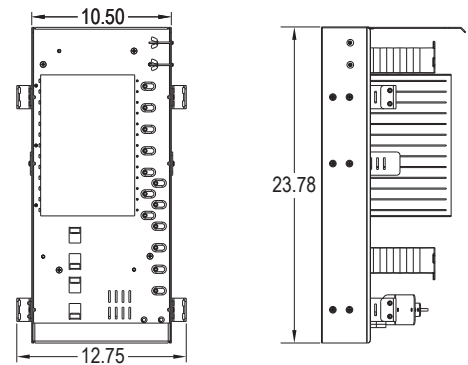
- Clearview Cassette for physical fiber protection, bend-radius protection, access
- Buffer tube slack storage fully bend-radius protected
- Flood-proof non-metallic pedestals
- Can wrench accessible designs

#### Access

- Lift off flood-proof dome covers are non-metallic
- Clearview Cassette for quick access to terminations
- Cupboard style front and rear access-Metallic
- Split lid Channell or Pencil vault

#### Investment

- Low cost entry with RUS listed pedestals
- Scalable with Clearview Multiplied design for cost alignment to subscriber revenue
- Future proof with drop only to PON distributed migration
- Patch only or patch and splice configurations supported
- Flexible integration into a variety of RUS listed pedestals with simple bracket kits



### Accessories

- WaveSmart High Density Splitter



#### Vault and Pedestal

V6A-ZZZ-03-P - 24 x 36 x 24" (609.60 mm x 914.40 mm x 609.60 mm) with 12" (304.80 mm) cut out for Pencil 12" (304.80 mm) pedestal (includes pedestal)

VXZ-ZZZ-02-P - Vault Only

FPP-121230-LG - Pedestal for vault



# FieldSmart® Fiber Delivery Point (FDP)

## 144 Port PON in Pedestal Insert Kit/Vault Mount



### Technical Specifications

| FieldSmart Fiber Delivery Point 144 Port PON in Pedestal Insert Kit/Vault Mount |  |
|---|--|
| Dimensions (for insert only)  | 23.78" H x 12.75" W x 10.86" D (604.01 mm x 328.85 mm x 275.84 mm) with brackets |
| Port Density  | 144  |
| Feeder/Express Ports  | 12   |
| Cassette Types Support  | Clearview® Blue - Left Exit  |
| Connector Types   | SC/UPC, SC/APC, LC/UPC, LC/APC   |
| Cable Types   | Indoor/Outdoor, Outdoor (Riser/Non-Rated), Outdoor Armored (Riser/Non-Rated)     |
| Splice Capacity   | 12 splices in each Clearview Cassette  |
| Splitter Capacity   | 5 with High Density Splitter (KE series)   |
| Material  | 14 gauge cold rolled steel with almond powder coating                            |

### Configured Part Numbers

**J** \_\_\_\_\_ - \_\_\_\_\_ - \_\_\_\_\_ - **A Z Z - B** XXXXM or XXXXF  
1    2    3    4    5    6

**1 144 Port Insert**

- 8 = PON, Patch and splice insert with non-metallic direct bury Pencell Pedestal, vault included
- 9 = PON, Patch only insert with non-metallic direct bury Pencell Pedestal, vault included
- F = PON, Patch and splice insert with Channell Pedestal, vault included
- S = PON, Patch only insert with Channell Pencell Pedestal, vault included
- E = PON, Patch and splice insert with Channell Pedestal (to fit Channel Vault), vault not included
- R = PON, Patch only insert with Channell Pedestal (to fit Channel Vault), vault not included

**2 Select Feeder Port Count**

- A = No feeders
- B = 12 ports (1 cassette)
- Z = N/A

**3 Select Distribution Port Count**

- X X X = port count in increments of 12
- Z Z Z = N/A

**4 Select Connector Style**

- A = SC/UPC                  F = LC/UPC
- C = SC/APC                H = LC/APC
- Z = N/A

**5 Select Mode / Type**

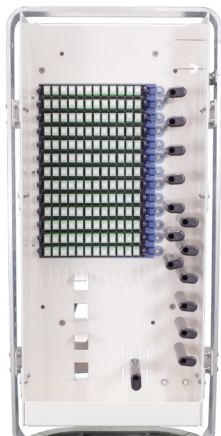
- 1 = Singlemode - non-ribbon
- 2 = Singlemode - ribbon

**6 Select Cable Construction**

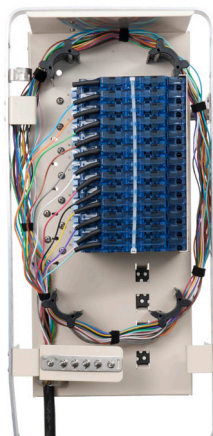
- B = OSP Riser
- E = OSP Non-Rated
- F = Patch and splice
- M = Armored OSP Non-Rated
- Z = N/A

**XXXXM or XXXXF**

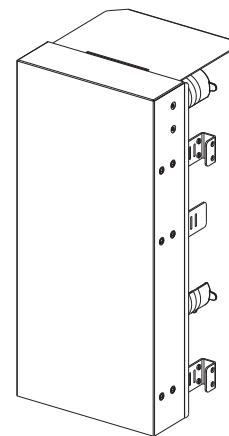
XXXXM = Length of Pigtail in Meter  
XXXXF = Length of Pigtail in Feet



144 PON Insert - Front



144 PON Insert - Back



144 PON Insert with Cover