

FieldSmart® Fiber Delivery Point (FDP)

Splice Only Pedestal



Application

The FieldSmart FDP Splice Only Pedestal provides splice or interconnect connectivity at the access point for the last mile drop.

Description

The FieldSmart FDP Splice Only Pedestal incorporates field-tested slack management and fiber splice trays to provide a craft-friendly splice only access solution. The splice only pedestal can be configured to support the specific drop cable, multi-fiber and ring cut requirements. The Clearfield® designed back plane makes it possible for the bulkheads to integrate into industry standard pedestals.



Features and Benefits

Integrity

- RUS listed
- Compliant to Telcordia GR-13

Protection

- Open architecture
- Strength, rigidity and security all in a high-performance thermo-plastic or metallic material designed to Telcordia GR-13 and RUS PE-91 specifications
- Single point self-locking cover provides secure pedestal locking and eased craft access
- Available in metallic and non-metallic pedestals

Access

- Removable front covers on metallic versions
- Can wrench fasteners
- Easy lift-off dome on thermo-plastic models - allows for 360° access permits complete access to all wire work and equipment

Investment

- Low cost entry with RUS listed pedestal
- Utilizes cost effective
- Up to 16 splice trays with Clearfield regular drop cable assembly or industry standard HFOC
- Integrates distribution splices, splitters and slack cable for a cost-effective flexible option for any FTTP deployment

Accessories

- Splice Tray - Each splice-slot holds up to 2 fibers. 12 splice-slots in each tray hold up to 24 fibers. 10 mm H x 163 mm W x 126 mm D



FieldSmart® Fiber Delivery Point (FDP)

Splice Only Pedestal



Technical Specifications

FieldSmart Splice Only Ped	Metallic BD5	Non-metallic ProFORM 12	Non-metallic Pencil 10x10
Dimensions	43.25" H x 10.5" W x 10.5" D (1098.55 mm x 266.70 mm x 266.70 mm)	45" H x 10.5" W x 14.5" D (1143.00 mm x 266.70 mm x 368.30 mm)	31.4" H x 13" W x 13" D (797.56 mm x 330.20 mm x 330.20 mm)
Cover Height	31.25" (793.75 mm)	30" (762.00 mm)	20" (508.00 mm)
Base Height (Buried)	12" (304.80 mm)	15" (381.00 mm)	11.4" (289.56 mm)
Material	Galvanized steel	High performance thermo-plastic	HDPE/LDPE
Density	Up to 384 splices		Up to 144 splices
Number of Splice Trays	Up to 16		Up to 6
Splice Capacity	24 splices in each splice tray		
Splice Tray Dimensions	10 mm H x 163 mm W x 126 mm D		

Configured Part Numbers

J ____ Z - ____ - Z Z Z - Z Z Z

1

2

1 Select Pedestal Type

2 = Emerson BD5

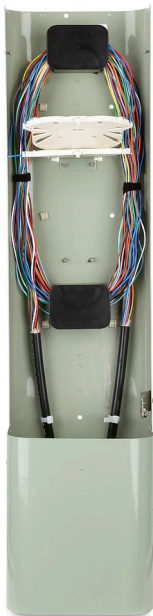
3 = Pencil 10 x 10

W = Proform non-metallic

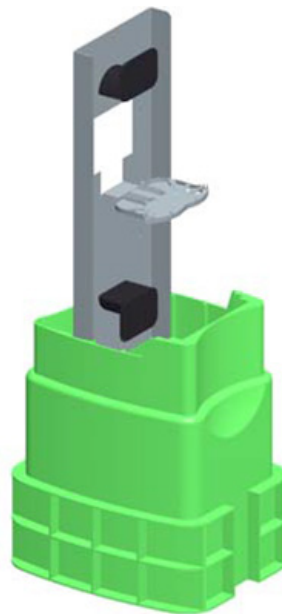
2 Select Distribution Port Count

X X X = port count in increments of 12 up to 144 ports

Z Z Z = N/A



Metallic BD5



ProFORM 12 Non-Metallic



Pencil