

Copper

CAT5e and CAT6 Patch Cords



Application

Category 5e and 6 copper patch cords connect a variety of equipment interfaces in both carrier and private networks, as well as customer premise environments.

Description

These patch cords provide physical mated connections between components in 10BASE-T, 100BASE-T and 155 Mbps ATM networks. Clearfield® offers Category 5e and 6 copper patch cords with UTP cable and 8-conductor connectors manufactured to EIA/TIA standards.

Features and Benefits

Integrity

- Meets or exceeds EIA/TIA 568 B.2 MP 10/15/15
- RoHS and WEEE compliant
- ETL verified
- UL Listed
- 100% tested for continuity and performance

Protection

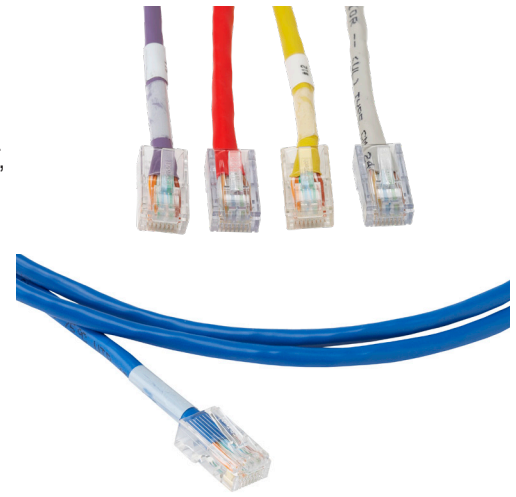
- Strain relief boots

Access

- Latch guards with easy thumb depression
- Nine stocked colors with custom configurations available

Investment

- Stock and custom serialization and labeling
- Stock and custom lengths available



Copper

CAT5e and CAT6 Patch Cords



Configured Part Numbers

Disclaimer/Note: Paper configurator shown is for reference only and should not be used to configure a saleable product configuration. All options shown on paper configurators may not be available or compatible with other options listed. Please contact your Clearfield representative for assistance in product configurations.

CAT5e Patch Cords

C T 5 - - N T - XXXM or XXXF *

1 **2** **3** **4**

1 Select Cable Color

0 = Black (PVC)
1 = White (PVC)
2 = Purple (PVC)
4 = Red (PVC)
5 = Green (PVC)
6 = Blue (PVC)
7 = Gray (PVC)
8 = Orange (PVC)
9 = Yellow (PVC)
A = Light gray (plenum)
B = Dark gray (plenum)
C = Black (plenum)
D = White (plenum)
E = Red (plenum)
F = Yellow (plenum)
G = Green (plenum)
H = Blue (plenum)

2 **3** Select Boot Colors

0 = Black
1 = White
2 = Purple
3 = Pink
4 = Red
5 = Green
6 = Blue
7 = Gray
8 = Orange
9 = Yellow
N = No boot

4 Select Wiring Configuration

1 = 568A
3 = Crossover

XXXM or XXXF

XXXM = Length in meters
XXXF = Length in feet

* Standard patchcords use stranded, non-shielded cable.

CAT6 Patch Cords

C T 6 - - N T - XXXM or XXXF *

1 **2** **3** **4**

1 Select Cable Color

0 = Black (PVC)
1 = White (PVC)
2 = Purple (PVC)
4 = Red (PVC)
5 = Green (PVC)
6 = Blue (PVC)
7 = Gray (PVC)
8 = Orange (PVC)
9 = Yellow (PVC)
A = Black (plenum)
B = White (plenum)
E = Red (plenum)
F = Green (plenum)
G = Blue (plenum)
H = Light gray (plenum)
K = Yellow (plenum)

2 **3** Select Boot Colors

0 = Black
1 = White
2 = Purple
3 = Pink
4 = Red
5 = Green
6 = Blue
7 = Gray
8 = Orange
9 = Yellow
N = No boot

4 Select Wiring Configuration

1 = 568A
3 = 568A crossover
B = 568A – certified cat 6
D = 568A crossover – certified cat 6

XXXM or XXXF

XXXM = Length in meters
XXXF = Length in feet

* Standard patchcords use stranded, non-shielded cable.